

## Customization - GRIN Biophotonic Probes

Applications:

- Imaging Probes

In addition to our standard products, GRINTECH offers fiber systems according to customer specifications.

Please ask us and let us know your requirements as detailed as possible (the closer we know your specifications the better we can advise you).

For the optical and mechanical design and the quotation we need at least the following information:

### For Imaging probes

Fiber bundle type (Fujikura):

FIGH-10-350S, FIGH-10-500N, FIGH-30-800N, FIGH-50-1100N, **other**

Fiber bundle Length:

Connector:

none or FC/PC

Working distance:

Diameter of the optical components:

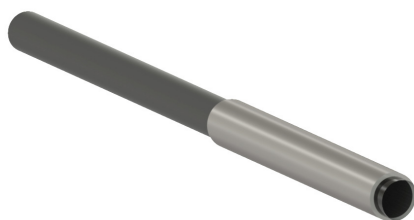
0.5 or 1.0 mm

Others:

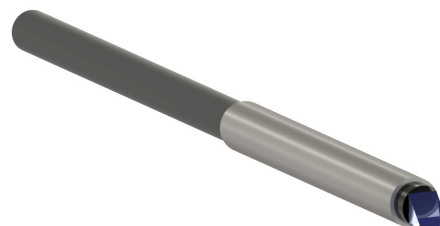
For example: prism for side firing, ...

Quantity:

Typical configurations:



GRIN-Lens  
Stainless Steel Tube  
Imaging Fiber Bundle



GRIN-Lens  
Prism  
Stainless Steel Tube  
Imaging Fiber Bundle